

WELLINGTON GREEN MUPD B REPLAT OF TRACT 2 AND CIVIC TRACT

BEING A REPLAT OF CIVIC TRACT, WELLINGTON GREEN, A MUPD/PUD, ACCORDING TO THE PLAT THEREOF, AS RECORDED IN PLAT BOOK 87, PAGES 81 THROUGH 90 AND TRACT 2 OF WELLINGTON GREEN, A MUPD/PUD, A REPLAT OF TRACT B, ACCORDING TO THE PLAT THEREOF, RECORDED IN PLAT BOOK 110, PAGES 183 THROUGH 188 BOTH OF THE PUBLIC RECORDS OF PALM BEACH COUNTY, FLORIDA, LYING IN SECTION 13, TOWNSHIP 44 SOUTH, RANGE 41 EAST, VILLAGE OF WELLINGTON, PALM BEACH COUNTY, FLORIDA.

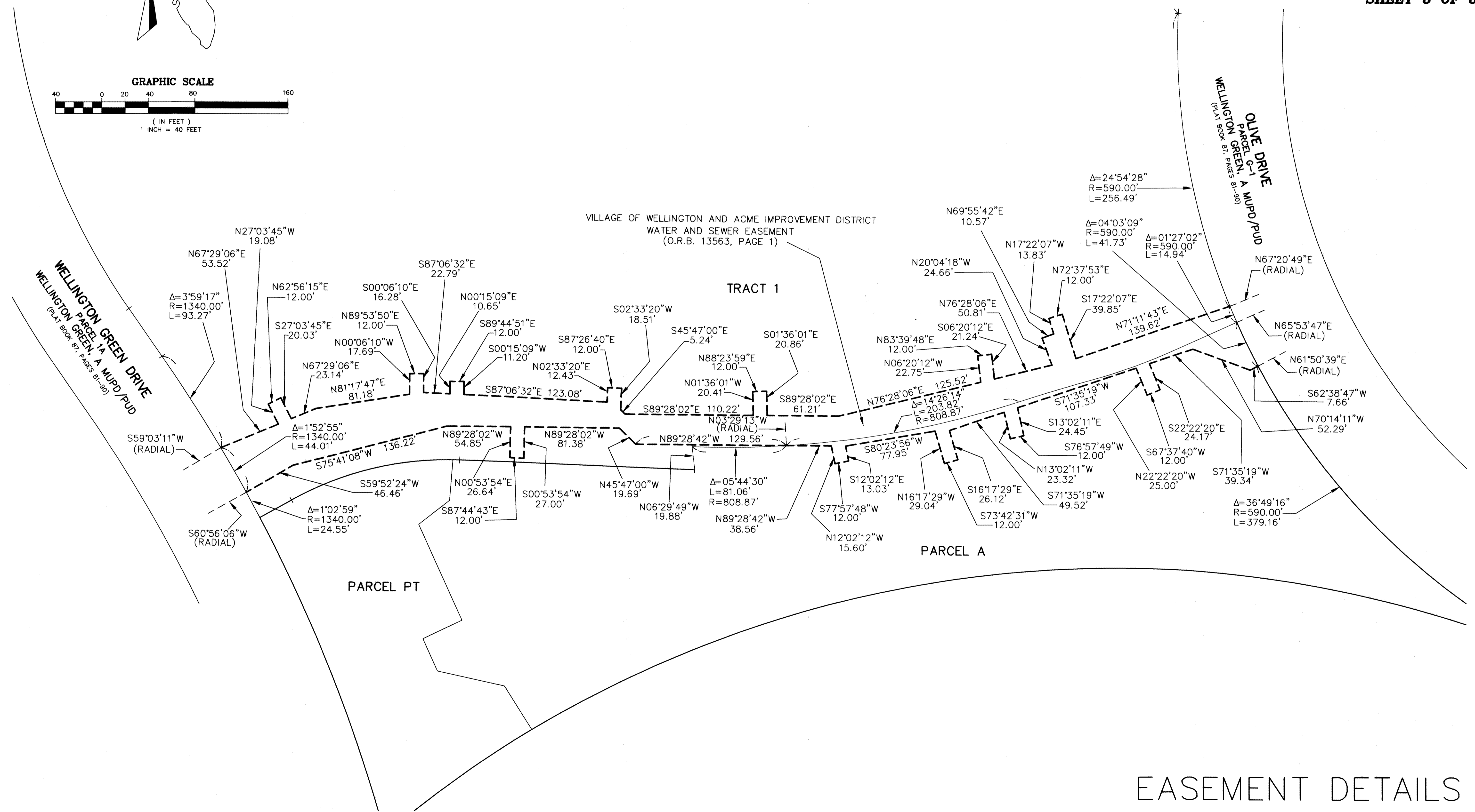
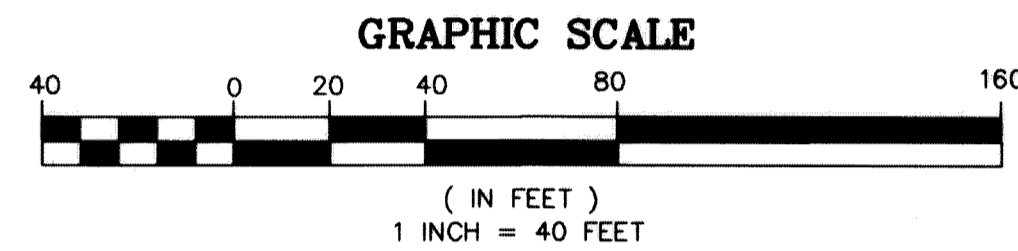
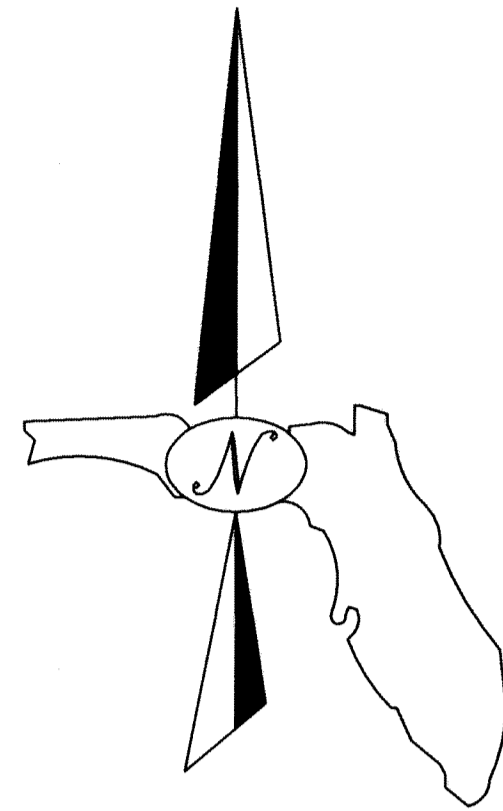
THIS INSTRUMENT PREPARED BY
DAVID P. LINDLEY

CAULFIELD and WHEELER, INC.
SURVEYORS - ENGINEERS - PLANNERS
7900 GLADES ROAD, SUITE 100
BOCA RATON, FLORIDA 33434 - (561)392-1991
SEPTEMBER - 2018

22

SHEET INDEX
SHEET 1 - COVER SHEET
SHEET 2 - MAP SHEET
SHEET 3 - EASEMENT DETAIL FOR O.R.B. 13563, PAGE 1

SHEET 3 OF 3



EASEMENT DETAILS